



Manual

Installation Instructions

Version 3.6

English

Imprint

Vector Informatik GmbH
Ingersheimer Straße 24
D-70499 Stuttgart

The information and data given in this user manual can be changed without prior notice. No part of this manual may be reproduced in any form or by any means without the written permission of the publisher, regardless of which method or which instruments, electronic or mechanical, are used. All technical information, drafts, etc. are liable to law of copyright protection.

© Copyright 2015, Vector Informatik GmbH. Printed in Germany.
All rights reserved.

Table of contents

1	Introduction	2
1.1	About this User Manual	3
1.1.1	Certification	4
1.1.2	Warranty	4
1.1.3	Registered Trademarks	4
2	Driver Installation	5
2.1	Minimum Requirements	6
2.2	Hints	7
2.3	Vector Driver Setup	8
2.4	Vector Hardware Configuration	10

1 Introduction








In this chapter you find the following information:

1.1	About this User Manual	page 3
	Certification	
	Warranty	
	Registered Trademarks	

1.1 About this User Manual

Conventions

In the two following charts you will find the conventions used in the user manual regarding utilized spellings and symbols.

Style	Utilization
bold	Blocks, surface elements, window- and dialog names of the software. Accentuation of warnings and advices. [OK] Push buttons in brackets File Save Notation for menus and menu entries
Windows	Legally protected proper names and side notes.
Source Code	File name and source code.
Hyperlink	Hyperlinks and references.
<CTRL>+<S>	Notation for shortcuts.
Symbol	Utilization
	Here you can obtain supplemental information.
	This symbol calls your attention to warnings.
	Here you can find additional information.
	Here is an example that has been prepared for you.
	Step-by-step instructions provide assistance at these points.
	Instructions on editing files are found at these points.
	This symbol warns you not to edit the specified file.

1.1.1 Certification

Certified Quality Management System Vector Informatik GmbH has ISO 9001:2008 certification. The ISO standard is a globally recognized standard.

1.1.2 Warranty

Restriction of warranty We reserve the right to change the contents of the documentation and the software without notice. Vector Informatik GmbH assumes no liability for correct contents or damages which are resulted from the usage of the documentation. We are grateful for references to mistakes or for suggestions for improvement to be able to offer you even more efficient products in the future.

1.1.3 Registered Trademarks

Registered trademarks All trademarks mentioned in this documentation and if necessary third party registered are absolutely subject to the conditions of each valid label right and the rights of particular registered proprietor. All trademarks, trade names or company names are or can be trademarks or registered trademarks of their particular proprietors. All rights which are not expressly allowed are reserved. If an explicit label of trademarks, which are used in this documentation, fails, should not mean that a name is free of third party rights.

→ Windows, Windows 7, Windows 8.1 are trademarks of the Microsoft Corporation.

2 Driver Installation

In this chapter you find the following information:

2.1	Minimum Requirements	page 6
2.2	Hints	page 7
2.3	Vector Driver Setup	page 8
2.4	Vector Hardware Configuration	page 10

2.1 Minimum Requirements

Hardware

CPU	Pentium 4 or higher
Memory	512 MB or more
Network interface	CANcardXL : PCMCIA CANcardXLLe : ExpressCard 54 CANboardXL PCI : PCI CANboardXL PCIe : PCI Express x1 CANboardXL PXI : Compact PCI/PXI CANcaseXL : USB CANcaseXL log : USB VN1610 : USB VN1611 : USB VN1630A : USB VN1640A : USB VN2610 : USB VN2640 : USB VN3300 : PCI VN3600 : USB VN5610 : USB VN7570 : PCI Express x1 VN7572 : PCI Express x1 VN7600 : USB VN7610 : USB VN8910A : USB VN8912 : USB

Software

Operating system	Windows 7 (32/64 bit) Windows 8.1 (32/64 bit)
Driver version	8.x
Measurement application	The devices can be run with several applications from Vector (e. g. CANoe, CANalyzer) or with measurement applications from other companies. The devices require a related license. Applications based on the Vector XL Driver Library can be run without a license.

2.2 Hints



Note: Many desktop PCs have power managers which block the CPU for a specific time. This impairs accuracy of the time system. If your application has stringent timing requirements (e. g. time-driven sending of messages or time-driven evaluations), you have to deactivate these power managers. Power management settings may be contained in the BIOS setup or on the Control Panel of **Windows 7** / **Windows 8.1** (e. g. Power options).

No further mention will be made of the power manager in this document.



Info: Please note that you will need **Administrator Rights** for the following steps.

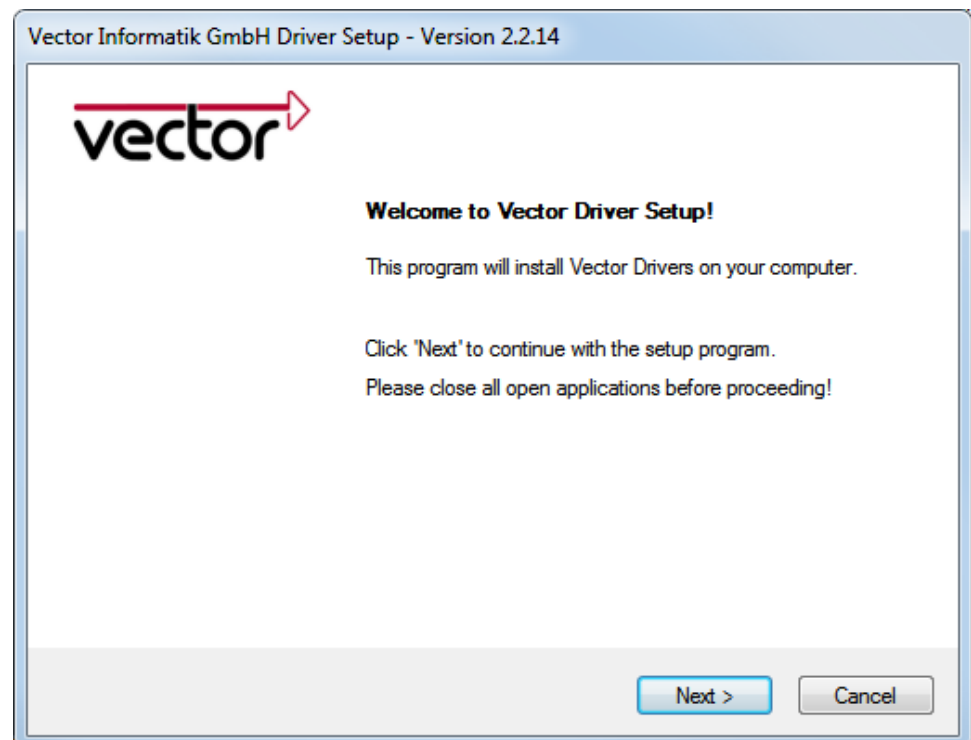
2.3 Vector Driver Setup

General information The Vector Driver Disk offers a driver setup which allows the installation or the removal of Vector devices.



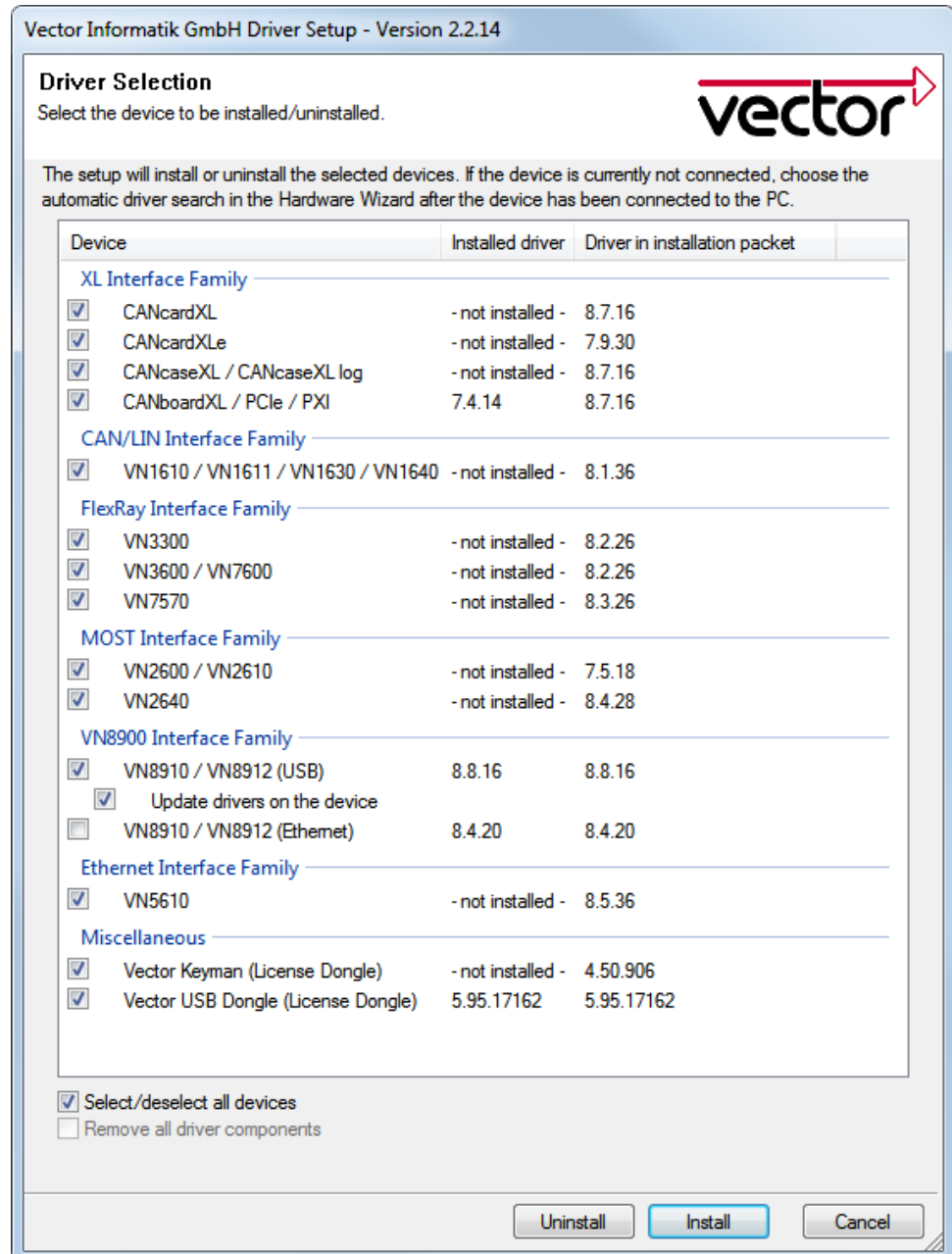
1. Execute the driver setup from the autostart menu or directly from `\Drivers\Setup.exe` before the device is inserted or connected to the PC with the included USB cable.

If you have already inserted or connected the device to the PC, the **Windows found new Hardware** wizard appears. Close this wizard and then execute the driver setup.



2. Click **[Next]** in the driver setup dialog. The initialization process starts.

3. In the driver selection dialog select your devices to be installed (or to be uninstalled).



4. Click **[Install]** to execute the driver installation, or **[Uninstall]** to remove existing drivers.
5. A confirmation dialog appears. Click **[Close]** to exit.
If the driver has been installed properly, the device can be inserted or connected to the PC with the included USB cable. The device is ready for operation now.

2.4 Vector Hardware Configuration

Executing Vector Hardware Config

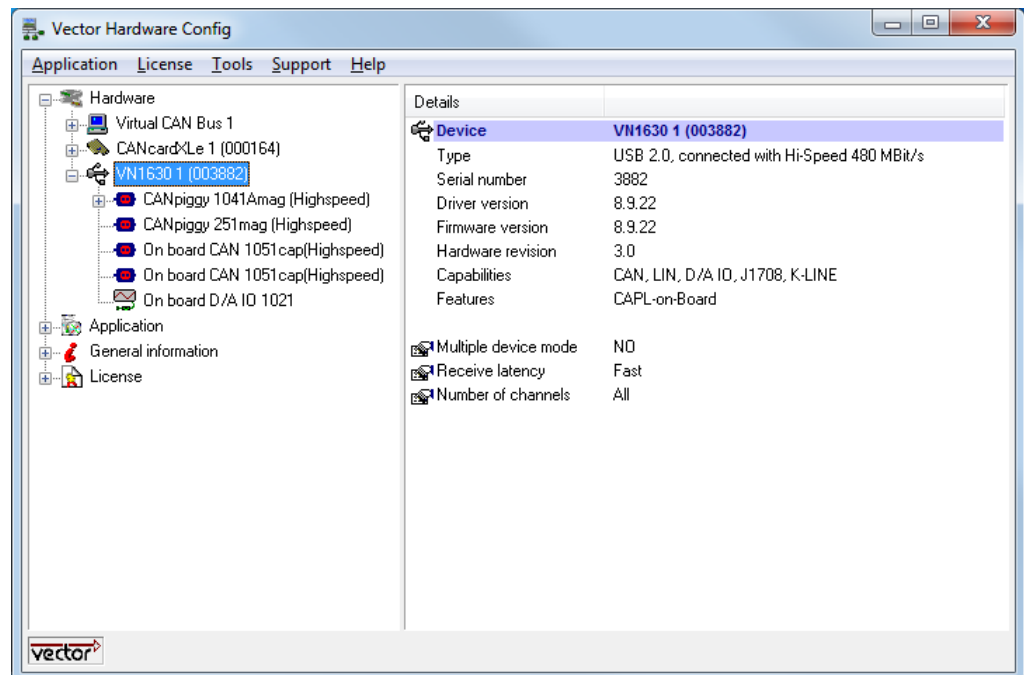
After the successful installation you will find the configuration application **Vector Hardware** in the Control Panel (see below). The tool gives you information about the connected and installed Vector devices. There are also several settings that can be changed.

Control panel Windows 7

- Category view
Windows Start | Control Panel | Hardware and Sound, click **Vector Hardware** in the list.
- Symbols view
Windows Start | Control Panel, click **Vector Hardware** in the list.

Control panel Windows 8.1

- Category view
<Windows key>+<X> | Control Panel | Hardware and Sound, click **Vector Hardware** in the list.
- Symbols view
<Windows key>+<X> | Control Panel, click **Vector Hardware** in the list.



The tool is split into two windows. The left window lets you access the installed Vector devices, the right window displays the details of the selection. The following nodes are available in the left window:

Hardware

Each installed Vector device is shown in **Hardware**. Additional details of available channels are shown in a tree view. Status information on the device components and the channels are also shown in this dialog.

Application

In **Application**, all available applications are shown with their configured channels. If you click on an application, all of its channels are displayed in the right pane on the screen.

General information

The **General information** section contains general information on Vector devices and

applications.

License

The **License** section contains information on all current valid licenses.



Note: You will find a detailed description of **Vector Hardware Config** in the online help (**Help | Contents**).

Get more Information!

Visit our Website for:

- > News
- > Products
- > Demo Software
- > Support
- > Training Classes
- > Addresses

www.vector.com